



AICHI NAGOYA

THE HEART OF JAPANESE AEROSPACE



AICHI-NAGOYA AEROSPACE CONSORTIUM

ANAC strives for comprehensive development of the aerospace industry in Aichi Prefecture via collaboration by all sectors of the aerospace industry, such as The Aichi Prefectural Government, The City of Nagoya, local government organizations, support organizations, industry organizations and universities. Our consortium promotes the aerospace industry through various activities, such as forums, networking events, exhibiting, matchmaking, human resource development, consulting programs by various experts and support for R&D. We serve as a bridge to facilitate international business relations by collaborating with foreign government organizations and aerospace specific clusters. ANAC strives to bring together the capabilities of Aichi with the global community to create a brighter future for Aerospace.

THE HEART OF JAPANESE AEROSPACE

Aichi Prefecture is located in the central part of Japan, with a population of 7.5M centered around Nagoya City. The area boasts a GDP of \$331B, which is an economic scale equivalent to several countries in the world. Aichi Prefecture is the No.1 aerospace industrial region in Japan where the development and production of fuselage and wings of Boeing passenger jets, aircraft engines and Japanese flagship rockets, etc. are actively carried out. In addition, some companies including startups are working on the development of next-generation air mobility technologies such as eVTOL and suborbital spaceplane.

Furthermore, Aichi Prefecture is one of the world's leading industrial manufacturing regions where various industries thrive. Many global manufacturers in automotive and machine tooling such as Toyota Motor Corporation, DENSO, AISIN, OKUMA, DMG MORI and Mazak are headquartered in Aichi Prefecture.



Aichi Prefectural Government



City of Nagoya

C-ASTEC

Central Japan Aerospace
Total Encouragement Center



Aichi Industry
Promotion Organization



Nagoya Industries
Promotion Corporation



METI
Ministry of Economy, Trade and Industry



Komaki City



Nagoya Chamber of
Commerce & Industry

JETRO

Japan External
Trade Organization(JETRO)
JETRO NAGOYA



GREATER NAGOYA
INITIATIVE
Greater Nagoya
Initiative Center



NAGOYA UNIVERSITY



CHUBU UNIVERSITY



愛知県立大学
Aichi Prefectural University

OVERVIEW

GDP 

Comparable to
several countries
in the world

\$331 BILLION

TURNOVER 

No.1 **\$374** BILLION
FOR 46 CONSECUTIVE YEARS

UNIVERSITIES 
53

POPULATION 
ESTIMATE **7.5** MILLION

COMPANIES 
209,483

AICHI
NAGOYA CITY

EXPORT 
\$167 BILLION
IN NAGOYA CUSTOMS

EMPLOYEES 
4.2 MILLION

TURNOVER OF MAIN INDUSTRIES

AUTOMOTIVE



TOYOTA
DENSO
AISIN
MITSUBISHI MOTORS



\$193 BILLION

MATERIAL



METAL
RUBBER
PLASTIC



\$38.2 BILLION

PRODUCTION
MACHINERY/ROBOTICS



YAMAZAKI MAZAK
OKUMA
DMG MORI
JTEKT



\$17.3 BILLION

AEROSPACE

Aerospace Industry in the Chubu Area centered on Aichi Prefecture


PRODUCTION
VALUE

\$3.2 BILLION

DOMESTIC SHARE OF
PRODUCTION VALUE

 **34.6%**

B787

 almost **35%**
of B787 body parts
production

COMPANIES

 **176**

EMPLOYEES

 **9,706**

MAJOR AEROSPACE ENTERPRISES

[illegible]

1 COMPANY PROFILE

AERO INC. (AERO GROUP) AERO INC.

Address	2-65-27 Kusunoki, Yatomi, Aichi 498-0066, Japan
Tel	+81-567-66-3501
Email	Please contact us via the inquiry form on our website
Website	https://aeross.jp/wpen
Contact Person	Yusuke Takami Marketing and Sales promotion Office
Capability Category	Process Design for Manufacturing (including jig, assembly, painting, and outfitting)
Representative	Noriharu Nishimura
Sales Amount	3.5M USD
Capital	US\$208,333
Employees	140
Established	Oct-97
Certification	JIS Q 9100
Group Name	AERO GROUP
Major Customers	MHI, Subaru, Shinmaywa, KHI



■ BUSINESS OVERVIEW

AERO GROUP is an integrator of aircraft structural components with manufacturing facilities in Japan. We offer an integrated production system from jig fabrication to assembly and painting, and flexibly respond to small-lot and prototype production. In addition, we deliver quality rooted in aerospace manufacturing expertise across a wide range of services, including aviation support (consumable sales) and our trailer business.

■ PRODUCTS/MATERIALS/PART SIZE/FACILITIES & EQUIPMENT

- Products
Assembly, Painting, and outfitting of civil aircraft, defense-related, and apace system components
- Paint Booth Capacity
W 3.0m × L 6.0m × H 2.8m
- Main Equipment
CMM, sanding booth, paint booth, drying booth

■ OUR STRENGTH

AERO GROUP specializes in the manufacturing of aircraft structural components. Leveraging an integrated production system, competitive pricing, high-quality standards, and reliable delivery schedules, we flexibly meet diverse customer needs with multilingual support.

■ NEEDS WE CAN CORRESPOND/BUSINESS PARTNERS WE WANT

We offer comprehensive production services including assembly and painting, as well as flexible support for painting-only orders. From prototyping to mass production, we accommodate a wide range of requirements. Please feel free to contact us for your inquiries.

■ OFFICE & PLANTS

HQ Yatomi Plant

High quality, perfect delivery, stable, cost competitive.

We are next generation Japanese manufacturing.

2 COMPANY PROFILE

AOMI PRECISION CO., LTD.

Address	1-2-28, Mitocho, Miyukihama, Toyokawa-shi, Aichi 441-0314, Japan
Tel	+81-533-75-6762
Email	matsubara@aomi-ss.jp
Website	https://www.aomi-ss.jp/
Contact Person	Fumitaka Matsubara
Capability Category	manufacturing
Representative	Tsuyoshi Aomi
Capital	10 million
Employees	135
Established	January 10, 1992
Certification	JIS Q 9100 (to be acquired in November 2025)

■ BUSINESS OVERVIEW

High-precision metal machining, including lathe turning, CNC milling, grinding, and wire EDM (Electrical Discharge Machining).

■ PRODUCTS/MATERIALS/PART SIZE/FACILITIES & EQUIPMENT

Medical Related Parts, Automotive Parts, Semiconductor Components, Optical Equipment Related Components, etc.

■ OUR STRENGTH

Micromachining and high-precision grinding

■ NEEDS WE CAN CORRESPOND/BUSINESS PARTNERS WE WANT

We offer solutions for metal machining and product development challenges that other companies often find difficult to handle.

■ OFFICE & PLANTS

Chubu Office (Aichi Prefecture)

3 COMPANY PROFILE

ATSUTA KIGYO CO., LTD.

Address	4-1-1 Fukufune-cho, Nakagawa-ku, Nagoya, Aichi 454-0836, Japan
Tel	+81-52-355-8038
Email	businessdepartment@atsuta-kigyo.co.jp
Website	http://atsuta-kigyo.co.jp
Contact Person	Masayuki Nakashima (Representative Director) Takuto Mizuno
Capability Category	Aerospace parts manufacturing · Production of prototypes and development products · Part Processing (Airframe) · Tooling, Jigs · 3D Printer Products Processing
Representative	Masayuki Nakashima
Capital	15 million yen
Employees	36
Established	1956
Certification	JISQ9100:2016, MSJ4000
Major Customers	Mitsubishi Heavy Industries, Ltd., Aoyama Seisakusho Co., Ltd., Noritake Co., Ltd., JAXA (Japan Aerospace Exploration Agency)

■ BUSINESS OVERVIEW

We are good at processing difficult-to-cut materials such as inconel, titanium etc. We promoted the factory's IoT system and linked the in-house LAN and the machine tool to construct a monitoring, maintenance and analysis system. We will establish the best mix of the latest technology and traditional technology, respond quickly to high-mix low-volume production and meet customer needs.

■ PRODUCTS/MATERIALS/PART SIZE/FACILITIES & EQUIPMENT

【Products】 Aerospace product manufacturing

【Materials】

- Difficult to cut materials such as inconel, titanium, Hastelloy, Waspaloy, stainless etc.
- Aluminium(A5052, A7075)
- Steel (S45C, SCM435)
- Other (teel, copper, magnesium, aluminum bronze, etc.)
- AMS Standard (AMS5643, AMS5659, AMS5662, AMS4050, etc.)
- Materials for forging and casting

【Part Size】

- Machining Centers 15,500x4,700x3,500mm
- Lathes Φ 1,050x3,000mm
- Turning Centers Φ 3,500x2,000mm
- 3D Printer 2,500x1,300x2,190mm

【Main Facilities & Equipment】

- OKUMA MU-8000V-L (P) 5-Axis Multitasking Machining Centers (Φ 1000xH550)
- Matsuura 5-Axis Vertical Machining Center MX-520 (Φ 520xH330)
- OKUMA MULTUS B300 II Multitasking Machines (Max Turning dia Φ 630mm, Max work length 900mm)
- OKUMA LB4000EX II L-M NC Lathes (Φ 480x750L)
- OKUMA LB3000EX II MY NC Lathes (Φ 340x450L)
- Makino Milling Machine a 51nx 4-Axis Machining Centers (560x640x640mm)
- Mitutoyo CRYSTA-Apex S9106 CNC Coordinate Measuring Machines(905x1005x605)
- Mitutoyo SV-C3200 Surface Roughness/Contour Measurement Formtracer Extream
- Keyence WM-6210 (WM Series) Wide Area 3D Measuring Machine
- Keyence XM-5000 (XM Series) Portable 3D Measurement System

■ OUR STRENGTH

- 1) In strategy cooperation with partner companies, we also try integrated production with added value such as assembly, welding, sheet metal, assembly, and testing.
- 2) 3D Printer Products Processing
- 3) We have 70 years of knowledge in aerospace equipment manufacturing
- 4) We can respond quickly even with high-mix low-volume production, meeting customer needs with IoT systems.

■ NEEDS WE CAN CORRESPOND/BUSINESS PARTNERS WE WANT

- 1) In strategy cooperation with partner companies, we also try integrated production with added value such as assembly, welding, sheet metal, assembly, and testing.
- 2) Multiple process control is possible
- 3) 3D Printer Products Processing.
- 4) We can respond quickly even with high-mix low-volume production, meeting customer needs.
- 5) We are good at processing difficult to cut materials such as inconel, titanium etc.

■ OFFICE & PLANTS

4-1-1, Fukufune-cho, Nakagawa-ku, Nagoya, Aichi, Japan

4 COMPANY PROFILE

CHUO ENGINEERING CO., LTD. 



Address	Nitta Building, 1-17-23 Meieki-minami, Nakamura-ku, Nagoya, Aichi, 450-0003, Japan
Tel	+81-52-611-2919
Email	contact@chuo-eng.co.jp
Website	https://www.chuo-eng.co.jp/english/
Contact Person	Toru Shitani Operating Officer, General Manager of Aerospace Division
Capability Category	<ul style="list-style-type: none"> • Aircraft Design Engineering Services (Structural Design & Analysis, Testing) • Manufacturing Testing Equipment
Representative	Yutaka Ishida, CEO & President
Sales Amount	7.1 billion yen (as of the end of March 2025)
Capital	116 million yen (capital reserve is included)
Employees	547 (as of the end of April 2025)
Established	September 1995
Certification	JIS Q9100, ISO9001
Major Customers	MHI group, KHI group, IHI group, JAXA, SUBARU, HONDA group, Airbus Helicopters Japan

■ BUSINESS OVERVIEW

Our business is focused primarily on the design and analysis of Aircraft, Rocket and Aerospace Equipment. Especially Analysis and Additive Manufacturing Solution field, our technicians meet your demand with rich experience and skills. We also provide the design and manufacture of Test Equipment.

■ PRODUCTS/MATERIALS/PART SIZE/FACILITIES & EQUIPMENT

· Product & Services

Design Engineering : Structure, Equipment and Jigs
 Analysis Engineering : Strength Analysis, Vibration Analysis, Motion Analysis, Thermal Analysis, Fluid Analysis and Optimization
 Software Sales : HyperX
 R&D : Test Equipment

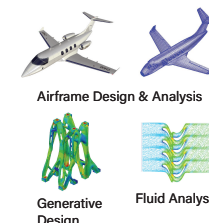
Additive Manufacturing : Design for Additive Manufacturing, Manufacturing Prototype, Machining, and Evaluation

· Design Tools

CAD : CATIA V4 V5, CREO, Unigraphics NX-2, Solid Works, AUTO CAD, MICRO CAD
 Analysis : HyperX, Abaqus, Nastran, HyperWorks, Apex, Patran, Femap, ADAMS, Marc, Fluent, NASGRO

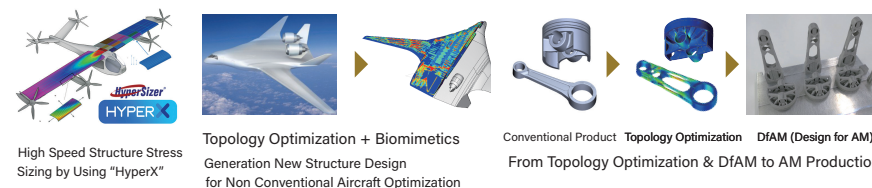
· Additive Manufacturing Facilities (Partner Company)

3D Printer : EOS M290, M400-4 (250mm×250mm×325mm, 400mm×400mm×400mm)



■ OUR STRENGTH

- We are the only design company in Japan that is strong in the field of aircraft structural design analysis and is capable of high-speed structural sizing using HyperX. Sizing more than 10 times faster than conventional methods can significantly reduce costs and schedules.
- We are strong in Additive Manufacturing Engineering. We can support the whole process - from selection of parts suitable for Additive Manufacturing to design proposal of new shape using topology optimization, and prototype manufacturing and evaluation.



■ NEEDS WE CAN CORRESPOND/BUSINESS PARTNERS WE WANT

- Customers who want Design and Analysis for Aerospace Vehicle.
- Customers who want Aerostructure Stress Sizing.
- Customers who want Additive Manufacturing Engineering Solutions.
- Customers who want Design and Manufacture prototype by Additive Manufacturing.

■ OFFICE & PLANTS

- Head Office (Tokyo)
- Office (Yokohama, Nagoya, Komaki, Fukuoka, U.S.A.)
- R&D Center (Komaki)

5 COMPANY PROFILE

DAIDO STEEL CO., LTD. 大同特殊鋼

Address	1-10, Higashisakura 1-chome, Higashi-ku, Nagoya, Aichi 461-8581, Japan
Tel	81-52-963-7501
Email	forging@ask.daido.co.jp
Website	https://www.daido.co.jp/en/index.html
Contact Person	FABRICATED MATERIALS DIV. AEROSPACE MATERIALS, GLOBAL MARKETING & SALES DEPT. AEROSPACE MATERIALS SECT.
Capability Category	Open die forging (parts for boats and ships, industrial machines, heavy electric machines, steel making equipment, chemical equipment, oil drilling rigs, and spacecraft and aircraft)
Representative	Tetsuya Shimizu
Sales Amount	¥ 578,564 million FY2022
Capital	¥ 37,172 million
Employees	12,422 (consolidated)
Established	Founded in August 19, 1916
Certification	JIS Q 9100:2016 (AS9100/EN9100), Nadcap etc.
Group Name	DAIDO Steel Group Europe GmbH, Daido Steel (America) Inc.
Major Customers	GE Aerospace, Pratt & Whitney, Rolls-Royce (Aerospace)

■ BUSINESS OVERVIEW

Daido Steel is the specialty steel manufacturer has a HQ in Nagoya, Japan. We address strict control from the raw materials to the manufacturing process via a thorough quality assurance system. In addition, our aerospace technology grew to the level of world recognition by supplying materials for heat-resistant materials to domestic and overseas manufacturers.

■ PRODUCTS/MATERIALS/PART SIZE/FACILITIES & EQUIPMENT

Stainless, Superalloys, Titaniums we can provide on your demand.
Applicable on AMS Grade.

- Stainless Steel: 15-5 (AMS5659), 17-4 (AMS5643), SUS321 (AMS5645)
- Superalloys: Alloy718(AMS5662/AMS5663), Alloy625(AMS5666), Alloy WA(AMS5706)
- Titaniums: Ti-6Al-4V (AMS4928), DAT54 (AMS6952TM)

■ OUR STRENGTH

Integrated Manufacturing Process (from melting to final machining)
is our key strength to work with the customer's worldwide.

■ NEEDS WE CAN CORRESPOND/BUSINESS PARTNERS WE WANT

We do facing customer's problems and sincerely work with the customer to solve them.
If you have any problems with specialty steels, please ask us.

■ OFFICE & PLANTS

- Offices
HQ (Nagoya), Tokyo-HQ, Osaka, Fukuoka
- Facility
Chita (Tokai-Nagoya), Hoshizaki (Nagoya), Shibukawa (Gumma) etc.
13 facilities
- R&D
R&D (Nagoya), Technology center (Nakatsugawa-Gifu)

6 COMPANY PROFILE

DOKEN CO., LTD. **DOKEN**

Address	1-2 Domeki Hitikuwada, Shinshiro, Aichi 441-1338, Japan
Tel	+81-536-24-5100
Email	sales@doken.biz
Website	https://doken.biz/
Contact Person	(Production department) Daigo Ando (Sales department) Eiji Ohishi
Capability Category	<ul style="list-style-type: none"> • Machining (5-axis, 3-axis large NC router machining) • Materials, composite materials (forming of polycarbonate, composite of different plastics) • Surface treatment (hard coat solution manufacturing and surface treatment) • Design (product design, production mold design) • Inspection (performance test, evaluation, safety standard certification acquisition) • R&D (silicone hard coat sol-gel solution) • Others (big size silk printing, autoclave bonding)
Representative	Hideyo Ando, President
Sales Amount	JPY 844 million
Capital	JPY 100 million
Employees	50
Established	May 1985
Certification	DOT-875, ECE-43R, VSTD 25-3
Major Customers	Toyota, Toyota Industries Corp., Toyota Boshoku, Toyota Auto Body, Toyota C&D, Teijin, Mitsubishi HI, Kawasaki, Honda, Yamaha, Suzuki, Nismo, Aichi Police, National Police, Metropolitan Police, Government office

■ OFFICE & PLANTS

(Head factory) 1-2 Domeki Hitokuwada,
441-1338 Shinshiro city, Aichi Japan



■ BUSINESS OVERVIEW

"In the fields of next-generation Automobiles, high-speed Trains, Aircrafts, Ships, are being promoted plastic windows, which are lighter than glass windows.

The plastic windows are used polycarbonate(PC) plastic material, which is strong and has excellent transparency, but PC is inferior in surface hardness to glass and is easily scratched, and it is deteriorated by the ultraviolet rays of sunlight. Therefore, we have applied a hard coat to the surface with functions such as scratch resistance and weather resistance for practical use. We manufacture designs, jigs and molds by ourselves, have our own brand SARCoat® silicone hard coat sol-gel solution, and carry out all our own molding and surface treatment to produce plastic windows."

■ PRODUCTS/MATERIALS/PART SIZE/FACILITIES & EQUIPMENT

【Products category】

• Car window, Shinkansen window, Cabin roof window, Motorcycle windscreen, Security shield

【Plastics material】

• Polycarbonate (PC), Acrylic (PMMA), PC & PMMA Composite panel

【Facilities processable size】

• Heat Press Forming [processable max. size 2,500x1500mm]

• Injection Molding [mold tightening force 650tons]

• NC Router 5 axes type [processable max. size 2,400x1600mm]

• Dip coating type Hardcoat Line [processable max. size L1500xD1300xW300mm]

• Flow coating type Hardcoat Line [processable max. size 2400x1400mm]



Aircraft



Automobile



Train tracks



Protective equipment

■ OUR STRENGTH

"Large plastic windows can be formed transparently and without distortion, and we can consistently perform from development and formulation of silicone hard coat, which is hard and scratch resistant.

For plastic windows, we have obtained certifications such as the American automobile safety certification standard DOT, also the European product safety certification standard ECE."

■ NEEDS WE CAN CORRESPOND/BUSINESS PARTNERS WE WANT

"Develop, Design, Prototype, and Mass-produce for transparent and lightweight plastic windows. Various evaluation test equipment are able to obtain quality assurance and certification."

7 COMPANY PROFILE

ELECTROIMPACT, INC.

Address	1-8-9 Meiko, Minato Ward, Nagoya City, Aichi
Tel	08035029553
Email	rafael.dantas@electroimpact.com
Website	https://electroimpact.co.jp/
Contact Person	Dantas Rafael, director
Capability Category	
Representative	Bahr Isaac
Capital	5.000.000 JPY
Employees	8
Established	March 31, 2020

■ BUSINESS OVERVIEW

Automation systems for Aerospace Industry (Riveting machines, AFP, others)

■ PRODUCTS/MATERIALS/PART SIZE/FACILITIES & EQUIPMENT

■ OUR STRENGTH

■ NEEDS WE CAN CORRESPOND/BUSINESS PARTNERS WE WANT

■ OFFICE & PLANTS

8 COMPANY PROFILE

HARADA VEHICLE DESIGN CO., LTD.

Address	24 Nakashima Miyoshi-Cho Miyoshi Aichi 470-0224 Japan
Tel	+81-561-34-6538
Email	m-skm@hvd.co.jp
Website	https://www.hvd.co.jp/
Contact Person	Masato Sakuma
Capability Category	Engineering/Design Manufacturing (mass-production/prototype) Additive Manufacturing (3D printer) (Resin) Quality Assurance
Representative	Hisamitsu Harada
Sales Amount	JPY 16 billion (US\$ about 11 million)
Capital	JPY 30 million (US\$ about 26,000)
Employees	102 people (as of January 2025)
Established	1998
Certification	▪ JIS Q 9100 ▪ KQMS-7100
Major Customers	▪ TOYOTA MOTOR CORPORATION ▪ TOYOTA BOSHOKU CORPORATION

■ BUSINESS OVERVIEW

Our company can handle everything from design to manufacturing. By being involved in the project from the development stage, we can meet design requirements while proposing optimal manufacturing methods to achieve cost reduction.

We offer a full range of services from design to manufacturing (injection molding, vacuum molding, AM, secondary processing, inspection, and quality assurance) for the aerospace and defense industry and commercial aircraft.



■ PRODUCTS/MATERIALS/PART SIZE/FACILITIES & EQUIPMENT

【Products】

Mass-production

- Aircraft components (injection molding/Vacuum forming/AM)
- Automotive Parts (Assist grip /Hook)

Prototype

- Automotive Parts (seat/doorlock/interior/exterior/wire harness/software)
- Other products

【Facility&Equipment】

License

- CATIA V5 39
- SolidWorks 10
- Harness Designer 1
- Cabling Designer 2
- Poly Works 1
- Geomagic Design X 1

AM

- EOS P396(PA): 340×340×650mm (13.38×13.38×25.59 inch)
- ASPECT RaFaEl II (PP): 550×550×500mm (21.65×21.65×19.68 inch)

SCAN, Measuring instrument

- FARO ScanArm Quantum-S 1
- FARO Leap ST handy 3Dscanner 1

■ OUR STRENGTH

- We provide comprehensive support for the entire process, from planning and manufacturing to inspection and quality assurance.
- We have experienced engineers in various fields, including the automotive industry.
- We are contracted to manufacture aircraft seats (plastic parts) in mass production.
- We continuously deliver high-quality products using injection molding technology, which is highly difficult and unique to materials used in aircraft.
- Manufacturing prototype/ Mass-production with AM(resin)
- We collaborate with numerous partner manufacturers (casting, machining, insert molding, mold making, resin molding, and vacuum forming manufacturers), enabling us to respond quickly and flexibly.
- We will utilize our long-cultivated "manufacturing know-how" and work together with partner manufacturers from the production technology stage on "how to make better and more efficient products" and realize them.

■ NEEDS WE CAN CORRESPOND/BUSINESS PARTNERS WE WANT

- Aircraft seat supplier
- Aircraft interior supplier
- Flying Mobility supplier(including drone)
- Training Equipment
- GSE

9 COMPANY PROFILE

ISE INDUSTRY CO., LTD.



Address	190-1 Matoba, Akamatsu-cho. Anjo-shi, Aichi
Tel	0566-73-8661
Email	naitou@ise-kogyo.co.jp
Website	https://ise-kogyo.co.jp
Contact Person	Takayuki Naito
Capability Category	manufacturing
Representative	Shinkichi Akiba
Sales Amount	JPY 770 million
Capital	JPY 12 million
Employees	70
Established	June, 1979
Certification	JISQ9100/ISO9001/MSJ4000
Major Customers	Mitsubishi Heavy Industries, Ltd. Futaba Industrial Co., LTD. Aisin Takaoka Mexico, S. A. DE C.V.

■ BUSINESS OVERVIEW

We are in manufacturing industry, making prototypes based on the drawings we receive, and producing the first batch. We design molds and jigs, manufacture parts, and weld in-house.

■ PRODUCTS/MATERIALS/PART SIZE/FACILITIES & EQUIPMENT

- Piping within the scope of MSJ4000 certification, mufflers, exhaust manifolds and jigs within the scope of ISO certification
- JIS Q 9100 (scheduled to be acquired for piping processing in November 2024)
- Iron, Stainless Steel, Aluminum
- The muffler supports a length of 3000mm
- Machining / 25 type to 120 type bender / Welding Machine

■ OUR STRENGTH

One of our strengths is that we consistently perform in-house production of molds and jigs used in-house, bending of pipes, production of sheet metal parts, and welding assembly. We are especially good at bending pipes.

■ NEEDS WE CAN CORRESPOND/BUSINESS PARTNERS WE WANT

We can handle bending prototypes, requests for initial products, manufacturing of jigs, and welding. Currently, there are many automobile-related products, and we are doing business with Mitsubishi Heavy Industries in the space field, but if there is demand from other heavy industries, we would like to talk to you.

■ OFFICE & PLANTS

Ogaki manufacturing plant

10 COMPANY PROFILE

ITO KINZOKU KOGYO CO., LTD. **itokin**
伊藤金属工業株式会社

Address	100 Ubaike, Ogawa, Higashiura-cho, Chita-gun, Aichi
Tel	+81-562-57-5201
Email	t.miura@itoukinzoku.co.jp
Website	https://www.itoukinzoku.co.jp/
Contact Person	Hidetoshi Ohashi Hironobu Shibano Takahiro Miura
Capability Category	Various automotive parts (oil nozzles, bolt unions, oil check valves, drain cocks, union pipes, etc.), various non-ferrous metal parts
Representative	Yoshihide Ito
Sales Amount	7.5 billion yen
Capital	50 million yen
Employees	261
Established	March 29, 1951
Certification	ISO14001, ISO9001
Major Customers	Toyota Motor Corporation, Toyota Industries Corporation, Daihatsu Motor Co., Aisin Corporation, Hino Motors, Ltd., Toyota Tsusho Corporation

■ BUSINESS OVERVIEW

- Manufacture and sale of various automotive parts (oil nozzles, bolt unions, unions, oil check valves, drain cocks, union pipes)
- We are a "group of engineers" that creates the future by developing manufacturing technologies, with a focus on functional components that determine the performance of automobile engines.
- We provide products that satisfy our customers at low cost through continuous quality improvement.



■ PRODUCTS/MATERIALS/PART SIZE/FACILITIES & EQUIPMENT

【Materials handled】

Iron, stainless steel, aluminum, copper

【Main Facilities】

Press (45t-300t), former, heat treatment furnace, brazing furnace, bender machine, CNC lathe, drilling machine, assembly machine, inspection machine, polishing machine, terminal processing machine, rolling machine

■ OUR STRENGTH

- We manufacture complex-shaped parts with high precision and efficiency, mainly for automotive powertrain components, using a wide variety of metalworking technologies that we have developed over more than 100 years since our founding.
- Complex shapes can be manufactured at low cost by joining components manufactured by cold forging, cutting, and pipe fabrication by brazing.
- In quality control, we have been awarded by a major automobile manufacturer for 10 consecutive years, and we have built a solid track record and credibility in meeting strict quality standards. Based on these technologies and achievements, we are now working on the application and development of these technologies in the field of aircraft.

■ NEEDS WE CAN CORRESPOND/BUSINESS PARTNERS WE WANT

Companies that can take advantage of our existing technologies that we have been working on for many years, as well as the thermoplastic composite material (CFRTP) that we are currently developing, bending technology for processing long bus bars, and special fin processing technology (skive processing).

■ OFFICE & PLANTS

Head office plant: Higashiura-machi,
Chita-gun, Aichi, Japan
Kariya plant: Kariya, Aichi, Japan
PT. ITOKIN INDONESIA: Indonesia



11 COMPANY PROFILE

JAPAN QUALITY ASSURANCE ORGANIZATION **JQA**

Address	8th Floor, Nagoya Building Sakura-kan, 4-2-25 Meieki, Nakamura-ku, Nagoyashi, Aichi, Japan
Tel	052-533-9287
Email	yoshida-ibuki@jqa.jp
Website	https://www.jqa.jp/
Contact Person	IBUKI YOSHIDA
Capability Category	Management System Certification Calibration of Measuring Instrument
Representative	MASAAKI MAEOKA
Sales Amount	JPY 19,000,000,000
Employees	1,144
Established	October 28, 1957
Certification	JISQ9100 Accredited by JAB (CM009)
Group Name	DSP Research, Inc.

■ BUSINESS OVERVIEW

- We are recognized as Japan's top management system certification body, leading the industry with an outstanding record of domestic audits and innovative practices.
- We offer JIS Q 9100 audit services that focus on evaluating performance in Quality and Delivery, which are critical factors in the aerospace and defense industries.
- Our team includes many auditors with extensive experience and deep expertise in the design, development, manufacturing, and MRO of aircraft, engines, and equipment. Through audits that assess the effectiveness of management systems, we contribute to strengthening organizational capabilities from a longterm perspective.

■ PRODUCTS/MATERIALS/PART SIZE/FACILITIES & EQUIPMENT

- We offer certification services for various management systems, including JIS Q 9100.
- We offer ISO seminars and e-learning courses focused on management system certification, particularly in relation to JIS Q 9100.

■ OUR STRENGTH

- We are the No.1 certification body for JIS Q 9100 registrations (as of the end of FY2024, according to JQA).
- We have 52 registration records in the Aichi, Gifu, Mie.
- We conduct audits with a deep understanding of each organization's unique characteristics, a strong emphasis on on-site operations, and a forward-looking approach to support sustainable growth.

■ NEEDS WE CAN CORRESPOND/BUSINESS PARTNERS WE WANT

- Management system certification audits directly related to corporate management and quality.
- All entities engaged in the aviation, space, and defense sectors.

■ OFFICE & PLANTS

Tokyo head Office, ISO Kansai Office
ISO Tohoku Office, ISO Kyushu Office

12 COMPANY PROFILE

KAGA SANGYO CO., LTD. KAGA

Address	1-8-7 Shirakane, Showa-ku, Nagoya, Aichi 466-0058, Japan
Tel	+81-52-241-7131
Email	kg-sales@kagasangyo.co.jp
Website	https://www.kagasangyo.co.jp/en/
Contact Person	Yuki Kishida
Capability Category	Assembly, Sub-Assembly for aircraft parts Functional Component, Equipment Part Machining (Airframe) Sheet metal Forming Special Process Tooling, Jigs, GSE Engineering/Design
Representative	Osamu Mizoguchi
Sales Amount	US\$55M (100JPY/1USD)
Capital	US\$100K (100JPY/1USD)
Employees	129 Employees
Established	September 11, 1973
Certification	JIS Q 9100 & JIS Q 9001 MHI: MSJ4000/MS84001 KHI: KQMS-7100 SUBARU: FASOP-Q-009
Group Name	KAGA WORKS Co., Ltd. SAM Corporation
Major Customers	Mitsubishi Heavy Industries Ltd. Kawasaki Heavy Industries Ltd. Subaru Corporation IHI Corporation Hitachi Ltd. Etc.,

■ BUSINESS OVERVIEW

KAGA is composed of more than 170 SME domestic suppliers managed by us. KAGA had been established to supply parts and assemblies for commercial aircraft, spacecraft, and models for military products. We can provide services from the design process up to delivery, implementing top-quality assurance.

■ PRODUCTS/MATERIALS/PART SIZE/FACILITIES & EQUIPMENT

Products: Commercial aircraft components/Military products

Materials: Metal (Al, Steel, Ti, etc)/Nonmetal (resin, cloth, chemicals)

Parts size: Max: 9-10m

Facility: 3-axis/4-axis/5-axis/bending machine/turret punchpress/injection molding machine/vacuum forming machine/etc.

■ OUR STRENGTH

Our company can handle full-turn-key orders for aerospace products, even including special processes. Also, we can design and develop new products according to the customers' requests. We develop our technology and register patents. For example, the removal of air bubbles from sealants for lighting resistance inside the aircraft fuel tank.

■ NEEDS WE CAN CORRESPOND/BUSINESS PARTNERS WE WANT

- Integrated production and parts production with metals, resin, etc.. including sub-assemblies of aircraft structures
- Niche products, product R&D, and emergency products
- Our company would like to have transactions with the Prime manufacturers and the tier-1suppliers.

■ OFFICE & PLANTS

Head Office: 1-8-7, Shirakane, Showa-ku, Nagoya-shi, Aichi

Gifu Branch: 1-77, Unumakoigi-cho, Kakamigahara-shi, Gifu

Yokohama Office: 8th Floor, Liberty Shin-Yokohama, Shin-Yokohama 3-7-15, Yokohama, Japan

Komatsu Branch: 51 Bungyomachi, Kaga-shi, Ishikawa

Materials Center: 3-21 Kajigaishiki Nishi, Kitanagoya-shi, Aichi

SHIM Center: 10 Oye-cho, Minato-ku, Nagoya-shi, Aichi (Mitsubishi Heavy Industries Ltd.,

Nagoya Aerospace Systems, Works Composite, Wing Center Fabrication Factory)

13 COMPANY PROFILE

KINOSHITA PRECISION INDUSTRIAL CO., LTD.

Address	No.201, Marushin-cho, Kita-ku, Nagoya, 462-0063, Japan
Tel	+81-90-4291-4251
Email	hazama-t@kinoshita-abc.jp
Website	https://www.kinoshita-abc.jp
Contact Person	Toshihiko Hazama (Manager of Tokyo Office)
Capability Category	Precision parts processing, Prototype processing
Representative	Tomomi Kinoshita, Representative Director and President
Capital	JPY 38,000,000
Employees	70
Established	July 01, 1970 (Founded in 1948)
Certification	JIS Q 9100, JIS Q 9001
Major Customers	JUKI Corporation Shima Seiki Mfg., Ltd. SMC Corporation Yamato Sewing Machine Mfg. Co., Ltd. YKK Corporation (alphabetical order)

■ BUSINESS OVERVIEW

We started our business as a manufacturer of precision parts for industrial sewing machines which need accuracy and precision at a high level. We also invented very unique devices which we introduced to this industry for the first time in the world. We can handle all processes such as machining, heat-treatment, grinding, polishing, assembling, and inspection in a consistent production system. Such characteristics of our company is attracting attention from many advanced industries. Yes, aerospace industry is one of them.

■ PRODUCTS/MATERIALS/PART SIZE/FACILITIES & EQUIPMENT

Products: Precision Parts for Aerospace Industry

Materials: Aluminum, Stainless Steel, Titanium, Steel

Part Sizes: 5mm~100mm square max.

A4size(210x297mm) in approx..20mm thickness

Facility & Equipment

3/4/5-axis machining center Tapping center 12sets

Wire-cut electric discharge machine 9sets

CO2 Laser processing machine

Gas carburizing machine

Coordinate measuring instrument

3D CAD/CAM

Image measuring instrument

■ OUR STRENGTH

High-variety small-quantity production

Speedy production by effective system such as jigless

and moldless processing

Sustainability by traceable processing and inspection

Ultra precision machining

■ NEEDS WE CAN CORRESPOND/BUSINESS PARTNERS WE WANT

Made-to-order precision parts

Compatible with various materials

■ OFFICE & PLANTS

Head office and 6 factories in

Marushin-cho, Kita-ku, Nagoya

Liaison office in Tokyo

(Factory No.3)



14 COMPANY PROFILE

KITO SEIKI SEISAKUSHO CO., LTD.

Address	50 Nakane, Nakamachi, Toyota, Aichi 473-0904, Japan
Tel	+81-565-52-3757
Email	kaitenkougu@kitouseiki.co.jp
Website	http://www.kitouseiki.co.jp
Contact Person	Hiroyuki Watanabe
Capability Category	Manufacture of metalworking parts
Representative	Akitaka Kito
Sales Amount	800 million yen
Capital	20 million yen
Employees	50
Established	1963/3/1
Certification	JISQ / 9001
Major Customers	Toyota Industries Corporation, AISIN CORPORATION, KAGA SANGYO Co., Ltd., Okuma Corporation, DMG MORI CO., LTD., Yamazaki Mazak Corporation, Komatsu Ltd., Mitsubishi Heavy Industries, Ltd., Hitachi, Ltd., etc.



■ BUSINESS OVERVIEW

Manufacturer of machine precision parts
Live tooling unit repairs for CNC lathes
Defense-related parts (guided missiles, special vehicles, etc.)

■ PRODUCTS/MATERIALS/PART SIZE/FACILITIES & EQUIPMENT

Spindle plate / Iron, copper, aluminum, stainless steel
Lathes, milling, machining centers, cylindrical polishing, inner diameter polishing, plane grinding machines, 3D measuring instruments

■ OUR STRENGTH

Experts in round machine precision parts
Experts in repairing live tooling units for CNC lathes

■ NEEDS WE CAN CORRESPOND/BUSINESS PARTNERS WE WANT

All processing for prototype parts and small-lot, multi-product processed products



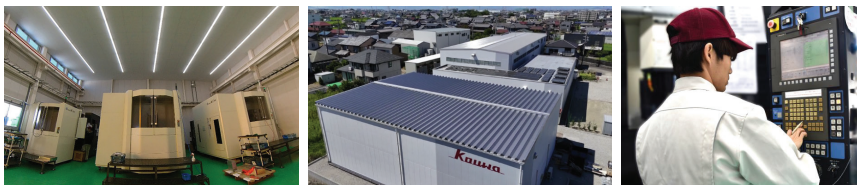
15 COMPANY PROFILE

KOUWA TEC CO., LTD. *カウワ*

Address	13-1 Nunouchi, Tomitsuka, Ama, Aichi 490-1202, Japan
Tel	+81-52-442-0113
Email	data@kouwa-tec.co.jp
Website	http://www.kouwa-tec.co.jp
Contact Person	Toshinobu Hayashi Minoru Kuroda
Capability Category	<ul style="list-style-type: none"> • Precision processing • Prototype • Difficult-to-cut material (Titanium and Inconel)
Representative	President and CEO: Toshinobu Hayashi
Capital	US\$100,000
Employees	30
Established	1965
Certification	JISQ9100 SBTi (Science-based target)
Major Customers	Kawasaki Heavy Industries, Ltd. SUBARU Corporation Shinmaywa Industries, Ltd. Nippi Corporation Sumitomo Precision Products Co., Ltd.

■ OFFICE & PLANTS

HEAD OFFICE: 13-1 Tmitsuka, Nunouchi, Ama-shi, Aichi 490-1202, Japan



■ BUSINESS OVERVIEW

Aerospace

- Rib parts for aircraft wings
- Components for satellites and rockets
- Defense and helicopter parts

Semiconductor

- Cleanroom robot components
- Sensor bodies and chambers for gas systems

Medical Devices

- Spinal implant components

Others

- Precision parts for hydrogen and drones (from prototype to mass production)

■ PRODUCTS/MATERIALS/PART SIZE/FACILITIES & EQUIPMENT

【Materials Handled】

- Aluminum (e.g., 5052, 7075)
- Difficult-to-machine materials (e.g., Titanium Ti-6Al-4V, Inconel 718, 15-5PH, SUS316)
- Others: Plastics, Aluminum Bronze, etc.
- Castings and Forgings

【Supported Sizes】

- Rectangular: up to 2000 mm
- Round: up to Ø800

【Main Equipment】

- 3-axis / 4-axis / 5-axis machining centers
- CNC lathes
- Electrolytic polishing machine
- 3D measuring instruments
- Surface roughness instruments
- 3D CAD/CAM

■ OUR STRENGTH

- Capable of supporting from the prototyping stage
- From one piece to 1,000 units per month
- Expertise in high-precision machining of difficult materials such as titanium and Inconel
- One-stop service from material procurement to machining, surface treatment, and inspection
- Shorter lead times achieved through jig-free and process-optimized production

■ NEEDS WE CAN CORRESPOND/BUSINESS PARTNERS WE WANT

- For companies seeking a reliable supplier offering stable delivery and consistent quality
- For companies needing high-precision machining of difficult-to-cut materials
- For companies looking for end-to-end support from prototyping to mass production

16 COMPANY PROFILE

KURIMOTO CO., LTD. KURIMOTO

Address	6 Terada, Kitajima, Iwakura, Aichi 482-0017, Japan
Tel	+81-587-66-8801
Email	y.kato@kmgogyo.co.jp
Website	http://www.kmgogyo.co.jp/corporate/index.html
Contact Person	Yoshiharu Kato, Corporate Officer/Sales Department General Manager
Capability Category	Automotive parts, aircraft parts, robot, energy, housing equipment, etc. Metal parts (AM, precision cutting, sheet metal press, etc.) Resin parts (AM, cutting, casting, molds, etc.)
Representative	Hidetoshi Kurimoto, Representative Director and President
Sales Amount	3,200,000,000 yen
Capital	84,570,000 yen
Employees	161 (as of April 2025)
Established	September 1990
Certification	ISO9001 / ISO14001 / JISQ9100
Group Name	ONTEC CO.,LTD. / SANRITSU CO.,LTD.
Major Customers	Automobile manufacturers, Parts manufacturers, Aircraft parts manufacturers

■ OFFICE & PLANTS

Sales offices (Utsunomiya / Yokohama /
Hamamatsu / Hiroshima)



■ BUSINESS OVERVIEW

Kurimoto Co., Ltd. Head quarter is in Iwakura City, Aichi. Since our founding, we have been investing in the latest equipment and improving our technical capabilities.

As a result, we are able to produce prototypes and mass-produced products with high quality, short delivery times, and low cost.

Recently, we have installed several of the latest 3D printers. In addition to manufacturing, we also sell 3D printer equipment.

■ PRODUCTS/MATERIALS/PART SIZE/FACILITIES & EQUIPMENT

- 3D Printer : 24 machines
 - SLS : 13machines (Stratasys, 3Dsystems, EOS)
 - SLA : 9machines (Stratasys, Carbon, D-MEC, CMET, 3DSystems)
 - FDM : 2machines (Stratasys)
- Metal 3D printer: 3 units (GF Machining Solutions / DMP Flex 350 / DMP Factory 500)
- Machining Center : 40machines (Mold production, resin, Metal Cutting)
- Spot welding line (D37m×W4m×H4m)
- Fiber laser welding (TRUMPF Tru Disk 3001)
- Laser cut (Mitsubishi Electric ML3015GX-F60)
- 3D Scanner : 2 machines (GOM ATOS II Triple Scan, Vectron VMC7000MApi)
- CT Scanner : 2 machines (Nikon MCT 225, XTH 450)
- Combined environmental tester : 2 machines (EMIC FH-40K/60)



■ OUR STRENGTH

- Multiple units of 3-axis and 5-axis metal processing machines
 - 3 metal 3D printers (500×500×500mm : 1 unit / 275×275×420mm : 2 unit)
 - Multiple measuring instruments (contact type, non-destructive)
 - Kurimoto manufactures parts with an integrated system that can handle from mold manufacturing to parts manufacturing.
- This makes it possible to produce a wide variety of products in small quantities.

■ NEEDS WE CAN CORRESPOND/BUSINESS PARTNERS WE WANT

- Various proposals using 3D printers.
- We are able to respond flexibly even with high-mix low-volume production, meeting customer needs.
Application to final products, inspection jigs, processing jigs, masking jigs, anti-vibration jigs, etc.
- Resinification of metal parts (In-house support from molds to molding is possible)
- Proposals centered on metal AM and precision cutting.

17 COMPANY PROFILE

KUZUHARA GOMU CO., LTD.



Address	97-1 Akago-Yokoyamachou Anjou-shi, Aichi, Japan
Tel	+81-566-74-1862
Email	mkuzuhara@kuzuharagomu.co.jp
Website	https://www.kuzuharagomu.co.jp
Contact Person	Representative director: Makoto Kuzuhara Sales: Kazuo Kahata
Capability Category	Masking jig for aircraft parts, rubber molded products
Representative	Makoto Kuzuhara
Sales Amount	423.43 million yen / 2022 period
Capital	3 million yen
Employees	35 people (the end of June 2022)
Established	16-Oct-92
Certification	ISO 9001 JISQ9100
Major Customers	Mishiguro Rubber · Sanwa Industry · Mino Chemical Industry · Fukoku · Iijima Electronics Industry · Chubu Beautification Company · M-Tech · Tomohiro Wise · Takasago Electric Industry · King Whetstone · Canto Tool · Masuda Vinyl

■ BUSINESS OVERVIEW

We design and manufacture masking jigs for the coating of turbine blades for PW1100G-JM mounted on Airbus A320.

We manufacture piston boots for automobile brake calipers, packing and cushion rubber.



■ PRODUCTS/MATERIALS/PART SIZE/FACILITIES & EQUIPMENT

General production of masking rubber and industrial rubber for turbine blade coating 500mm×500mm×H150mm

Rubber molding machine, vacuum rubber molding machine, frozen shot, optical microscope, thermostatic chamber



■ OUR STRENGTH

By creating a dedicated masking rubber using 3D CAD, instantaneous desorption is possible, enabling labor saving and high quality in the masking process.

Depending on the usage environment, it can be used many times.

We will listen to your needs and propose the best masking rubber.

■ NEEDS WE CAN CORRESPOND/BUSINESS PARTNERS WE WANT

Customers seeking labor saving and high quality in the painting process

Customers who want small lot and high variety support

■ OFFICE & PLANTS

Head office · Delivery center

18 COMPANY PROFILE

MEIHOKU KOGYO CO., LTD.

Address	1-8-1, Hachiyadai, Minokamo-city, GIFU, Japan
Tel	+81-0574-24-0628
Email	kazu.nishimura@meihoku-kogyo.co.jp
Website	http://www.meihoku-kogyo.co.jp/
Contact Person	Kazuki Nishimura
Capability Category	<ul style="list-style-type: none">• Cutting and sales of aircraft materials, manufacturing• non-destructive testing of aircraft parts
Representative	Yasukazu Fukunishi
Sales Amount	31.7 billion yen
Capital	60 million yen
Employees	239
Established	10/11/1947
Certification	JIS Q 9100, ISO 14001, ISO 9001, Nadcap (PT)
Major Customers	Major equipment manufactures

■ OFFICE & PLANTS

- Minokamo Factory: 1-8-1, Hachiyadai, Minokamo-city, GIFU, Japan
- Inuyama Factory: 1-18, Inuyama-city, AICHI, Japan

■ BUSINESS OVERVIEW

Our company's main business is the manufacture of steel wire for cold heading (automobiles). In recent years, we have also entered the aerospace business, selling aircraft materials and manufacturing aircraft parts, as well as undertaking non-destructive testing.

■ PRODUCTS/MATERIALS/FACILITIES & EQUIPMENT

We handle the following aircraft materials.

- Stainless steel: 15-5PH, 17-4PH, A286, SUS630, PH13-8Mo
- Aluminum: 7075-T7351, 6061-T6511
- Alloy steel: 4340, 4130, SAE8740
- Titanium: Ti-6Al-4V

*The above are examples.

Non-destructive testing and surface treatment are available as special processes.

For non-destructive testing, penetrant testing can be performed.

For surface treatment, cadmium plating and passivation treatment are available.

■ OUR STRENGTH

① We provide only the amount customers want, when they want it!

Aircraft materials are usually imported from overseas, which takes time and makes it difficult to purchase small quantities. That's why we store aircraft materials in-house, allowing us to provide small quantities at short lead times!

② We carry out non-destructive testing in a short period of time!

Non-destructive testing is the final process, so it often needs to be carried out in a short period of time. That's why we contribute to our customers with overwhelmingly short lead times support that other companies cannot imitate!

■ NEEDS WE CAN CORRESPOND/BUSINESS PARTNERS WE WANT

- Companies that are having trouble obtaining aircraft materials
- Companies that are having trouble meeting delivery deadlines for non-destructive testing
- Companies looking for a surface treatment outsourcer

19 COMPANY PROFILE

MITAKA SEIHAN CO., LTD.



Address	83 Futami-cho, Toyokawa, Aichi, Japan
Tel	+81-533-85-4351
Email	gateway_0004@mitaka-seihan.co.jp
Website	https://www.mitaka-seihan.co.jp/
Contact Person	Taichi Takasu (Aerospace Division General Officer) Ayaka Hashimoto, Kaori Kamiya (Aerospace Division Sales assistant) Junichi Takeno, Yosuke Sakakibara (Aerospace Division Quality Assurance Manager)
Capability Category	Special print processing for the aerospace and defense industry ①Anodizing process ※Scheduled to acquire Nadcap certification in 2028 ②Monster-class UV inkjet printing at a speed of 200m/h Maximum size 4'x8' ※ 2023.5 introduction decision ③High precision fiber laser processing Maximum size 4' x 8' ※2023.5 introduction decision ④High-quality and high-precision laser marking by 3Axis-YVO4SHGLASER ⑤Niche Prototyping Equipment/Technology & High Speed/High Performance Mass Production Equipment/Technology ⑥Online shop for materials and products for professionals ※Credit card payment accepted
Representative	Ryuta Takasu
Sales Amount	328M JPY
Capital	30M JPY
Employees	48 Employees
Established	April 7, 1955
Certification	JISQ9100(AS9100): 2016, ISO9001: 2015, ISO14001: 2015
Group Name	Mitaka Trading Co., Ltd.
Major Customers	Nabtesco Corporation, Yokogawa Electric Corporation, KONICA MINOLTA, INC., Kowa Company, Limited, SINTOKOGIO, LTD., NIPPON SHARYO, LTD., Shirakawa Olympus Corporation., TOYOTA TSUSHO MATERIAL INCORPORATED, OSG CORPORATION, Takatori Co., Ltd., Trading companies, government offices, etc.

■ BUSINESS OVERVIEW

We manufacture industry-specific metal nameplates and decals using industry-specific materials. We can respond to customer's needs including technology such as anodizing and silk screen printing + JISQ9100 elements. For anodizing, we started activities to obtain Nadcap certification. In addition, we plan to introduce a large 4' x 8' size fiber laser and a large high-spec UV inkjet printer this fall.

■ PRODUCTS/MATERIALS/PART SIZE/FACILITIES & EQUIPMENT

A group of manufacturing equipment necessary for special printing processing.

■ OUR STRENGTH

Special printing processing, etc. by in-house manufacturing and sales.



■ NEEDS WE CAN CORRESPOND/BUSINESS PARTNERS WE WANT

A manufacturing organization system that meets the quality and customer needs and requirements specialized in the aerospace and defense field. We hope to do business with the aim of sustainably supplying products.

■ OFFICE & PLANTS

- Head office factory 83 Futami-cho, Toyokawa-shi, Aichi Japan 442-0051
- Noguchi Factory 51-6 Tsuiji, Noguchi-cho, Toyokawa-shi, Aichi Japan 442-0044



20 COMPANY PROFILE

MITA KOSAKU CO., LTD. 見田工作株式会社

Address	Toyoda Minami-ku nagoya-shi, Aichi JAPAN
Tel	0526919346
Email	s-mita@mita-group.co.jp
Website	www.mita-group.co.jp
Contact Person	Shuji Mita
Representative	Masayasu Mita
Capital	JPY 84,672,000 yen
Employees	320
Established	1954
Certification	JISQ9100: 2016
Group Name	MITA TRANSPORT SERVICE
Major Customers	Mitsubishi Heavy Industries, Ltd. Mitsubishi Motors Corporation Fujitrans Co., Ltd.



■ BUSINESS OVERVIEW

We provide flexible services ranging from spot to full-scale packaging design, packaging improvement proposals, prototyping, mass production, and transportation. We also provide support for related services such as strength calculations, durability testing, and UN Mark acquisition. We have accumulated a lot of experience in the field of logistics, not only in corrugated cardboard boxes, but also in wooden boxes, steel boxes, returnable boxes, one-way boxes, and more. As a processing business, we mainly manufacture SUS can parts for food packaging machines. In the aircraft manufacturing field, we have a track record of devising, manufacturing, and selling production improvement tools, mainly for production process outsourcing, and recently we are aiming to enter the production improvement field using collaborative robots. In addition, we are broadening the scope of our services from materials to processing to transportation so that we can provide a wide range of manufacturing -related services from the customer's perspective with our cooperative partners.

■ PRODUCTS/MATERIALS/PART SIZE/FACILITIES & EQUIPMENT

Toshiba NC: VTL
Moriseiki NC: NL-2000
Mitsubishi M-V70C
Mitsubishi NC: MBS-52/55

■ OUR STRENGTH

Export Packing, Domestic Packaging, Packaging Design, SUS machining, Assembly, Material Sales

■ NEEDS WE CAN CORRESPOND/BUSINESS PARTNERS WE WANT

We have achievements in providing solutions to companies that have problems with the flow of goods, especially by proposing packaging redesign specifications such as de-plasticization and environmentally friendly packaging, improving production by introducing cooperative robots to production lines, and providing a wide range of human resources, including onsite contracting and manufacturing dispatch services.

■ OFFICE & PLANTS

HQ: Nagoya, Tsukiji Sales Office, Kyoto Sales Office, Kobe Sales Office, A/C Sales Office, Yatomi Logistics Center, Gifu Logistics Center, Itozaki Office, Kobe Office, Kitano Workplace, KD Logistics Center

21 COMPANY PROFILE

mitsui-soko co., ltd.

mitsui-soko express co., ltd.



Address	(Chubu Branch) 22-24, Marunouchi, 3-Chome, Naka-ku, Nagoya
Tel	052-972-0630
Email	hiroshi_chishiro@mitsui-soko.co.jp
Website	https://www.mitsui-soko.com/
Contact Person	Hiroshi Chishiro
Capability Category	Logistics
Representative	Chubu Branch Manager: Kenta Yasuhara
Sales Amount	280.7 billion (consolidated)
Capital	11.2 billion (consolidated)
Employees	7,882 (consolidated)
Established	October 11, 1909
Certification	(MSC) EN9120 / (MSE) IATA • CEIV Lithium Batteries

■ BUSINESS OVERVIEW

(MSC) We are capable of providing integrated services in all logistics fields, including ocean, air, and land transportation, import/export customs clearance, storage, delivery, inspection, sorting, etc., both domestically and internationally, to meet all the needs of our customers.

(MSE) is a joint venture with TOYOTA and provides high-quality air transportation services based on Toyota quality. In the Chubu region and at overseas bases, MSE handles everything from inspection to storage and transportation of prototype auto parts cargo.

■ OUR STRENGTH

(MSC) Belonging to the Aichi/Nagoya Aerospace Consortium and the only logistics provider with EN9120 certification, we provide logistics services that contribute to the development of the aerospace industry based on our long experience in aircraft materials storage.

(MSE) We specialize in the transportation of cold and hazardous goods using our proprietary cold packing materials. We also have abundant experience in reducing transportation costs by using packing materials.

■ NEEDS WE CAN CORRESPOND/BUSINESS PARTNERS WE WANT

(MSC) For companies that have consultation or problems related to logistics such as import/export, customs clearance, storage, transportation, and sorting of materials, parts, etc.

(MSE) Consultation on logistics such as air/sea transportation of materials, parts, etc.

■ OFFICE & PLANTS

Mitsui-Soko Kinjo Office

MITSUI-SOKO EXPRESS Co., Ltd. Narita International Airport Center

22 COMPANY PROFILE

NAGOYA QUALITY ASSURANCE TECHNOLOGY CO., LTD.



Address	18-12, Chiyoda-cho, Atsuta-ku, Nagoya, Aichi 456-0073, Japan
Tel	052-682-1882 (Quality Solutions)
Email	info@nqat.co.jp
Website	https://hinshoken-tfm.jp
Contact Person	Team Leader: Musashi Kurogi
Capability Category	<ul style="list-style-type: none"> • Consulting/seminars related to JIS Q 9100, AS/EN/SJAC9120 and Nadcap accreditation, etc. • AS13100 compliance support, etc. • Precise measurement of parts/CMM (coordinate measuring machine) program creation/FAI support, etc.
Representative	Tomomitsu Arita
Sales Amount	JPY 1 billion
Capital	JPY 10 million
Employees	120
Established	December 1, 1988
Certification	JIS Q 9100 accreditation Nadcap-NDT accreditation
Major Customers	<ul style="list-style-type: none"> • Mitsubishi Heavy Industries, Ltd. • Mitsubishi Heavy Industries Aero Engines, Ltd. • Kawasaki Heavy Industries, Ltd. • SkyDrive Inc etc.



■ BUSINESS OVERVIEW

【Quality Solution Division】

- (1) Providing seminars for JIS Q 9100 explanation/Internal Auditor Training etc.
- (2) Consulting for AS/EN/JIS Q 9100, AS/EN/SJAC9120 and Nadcap Accreditations and continuous improvement activities
- (3) Supporting for quality improvement activities, especially for aerospace products

【Quality Assurance Division】

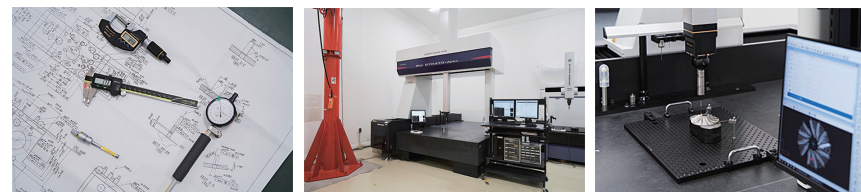
- (1) Dimensional Measurement for various parts and components /CMM part programming/ Independent inspection and FAI support
- (2) Calibration services

■ PRODUCTS/MATERIALS/PART SIZE/FACILITIES & EQUIPMENT

Komaki Measurement Center: Coordinate measuring machines, non-contact 3D macroscopes, contour/surface roughness tracer, etc.

■ OUR STRENGTH

We have skilled consultants who have enough experience in major aerospace companies. Their experience allows us to provide effective and practical consulting and seminars for AS/EN/JIS Q 9100/Nadcap accreditations and/or continuous improvement activities etc. We are also able to provide accurate and efficient measurements and CMM part inspection program with our advanced measurement technologies, which is recognized by major aerospace companies.



■ NEEDS WE CAN CORRESPOND/BUSINESS PARTNERS WE WANT

Please contact us for any quality issues.

■ OFFICE & PLANTS

【Headquarter】

18-12, Chiyoda-cho, Atsuta-ku, Nagoya, Aichi 456-0073, Japan

【Komaki Measurement Center】

153, Yasuda-cho, Komaki, Aichi 485-0014, Japan

23 COMPANY PROFILE

NSR JAPAN CO., LTD.



Address	Proto Aoi Building 3F, Aoi 1-23-14, Naka-ku, Nagoya, Aichi 460-0006 JAPAN
Tel	+81-52-325-5140
Mobile	+81-90-6397-5200
Email	nsrsales@nextsr.com
Website	www.nextsr.com
Contact Person	Naoki Makino, Senior Sales Manager
Capability Category	Material Sourcing and Distribution, Sales and Marketing, Employer of Record (EOR) Service, HR solution
Representative	Hiroto Shinohara
Sales Amount	300,000,000 JPY
Capital	10,000,000 JPY
Employees	30
Established	2004/11/22
Group Name	NSR GROUP
Major Customers	Boeing, IHI, RTX Corporation (Pratt&Whitney, Collins Aerospace, Pratt&Whitney Canada, Airinc), SUBARU, Triumph Group, Qarbon Aerospace, OEM Services Asia, American Honda Motors, Mitsui Bussan Aerospace, Sumitomo Wiring Systems

■ BUSINESS OVERVIEW

Material Sourcing, Domestic/International Sales&Marketing Service, Employer of Record (EOR) Service, Special Projects and Subcontracting, Technical Translation, Global Talent Acquisition/Dispatch Service (by NSR Group company)

■ PRODUCTS/MATERIALS/PART SIZE/FACILITIES & EQUIPMENT

Hardware, Materials, Chemicals, Equipment, etc.

■ OUR STRENGTH

Domestic and international sales & marketing, Business expansion support, Aerospace specific services (global partner search, business consulting, HR support, etc.), Global talent acquisition (by NSR group company)

■ NEEDS WE CAN CORRESPOND/BUSINESS PARTNERS WE WANT

- Material Sourcing and Import/Distribution.
- Support new and existing businesses expansion by providing solutions tailored to customer's need.
- Provide market research and representation services as well as language services, such as technical translation and interpretation.
- Provide HR solutions including talent acquisition and dispatch of skilled talent (by NSR group company)

■ OFFICE & PLANTS

US HQ : Next Step Resources of Ohio, Inc.
655 Metro Place South, Suite#600-044, Dublin Ohio 43017 U.S.A.
TEL +1-614-798-0671

JAPAN HQ : NSR JAPAN Co., Ltd.
Proto Aoi Bldg. 1-23-14 Aoi, Naka-ward, Nagoya-city, Aichi-pref. 460-0006 JAPAN
TEL+81-(0)52-325-5140

24 COMPANY PROFILE

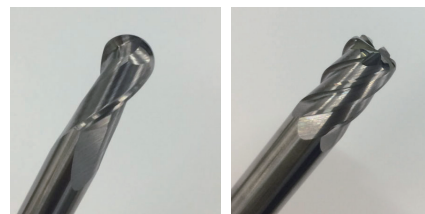
NTECH INC. 株式会社 nTECH

Address	2-16-9, Takayama-cho, Kasugai-city, Aichi 486-0912 Japan
Tel	+81-568-29-6006
Email	akira.n@ntech-tool.co.jp
Website	https://ntech-tool.co.jp/
Contact Person	Akira Nagae
Capability Category	Cutting tool sales for Heat Resistance Material Development and Study for cutting tool geometry staffing agency for engineer
Representative	Akira Nagae
Sales Amount	US\$620,000 (¥150/\$)
Capital	US\$240,000 (¥150/\$)
Employees	25
Established	2016
Group Name	 Nagae-siki.co., LTD
Major Customers	Mitsubishi Heavy Industries Mitsubishi Heavy Industries AERO ENGINE IHI Jet service



■ BUSINESS OVERVIEW

- We have established the cutting tool division for AEROSPACE industries.
- It is dedicated cutting tool from design, development to produce for heat resistant material such as Inconel, Waspaloy and Titanium.



■ PRODUCTS/MATERIALS/PART SIZE/FACILITIES & EQUIPMENT

- Walter HELITONIC POWER×2unit
- Walter HELICHECK PRO×1unit

■ OUR STRENGTH

- On demand design and product
- Small order
- Short lead time from design to ship

■ NEEDS WE CAN CORRESPOND/BUSINESS PARTNERS WE WANT

Study and development of cutting tool for resistant material

■ OFFICE & PLANTS

2-16-9, Takayama-cho, Kasugai-city,
Aichi 486-0912, Japan



25 COMPANY PROFILE

OMATA SHUTTER INDUSTRIAL CO., LTD.



Address	1-16-26, Aoi, Higashi-ku, Nagoya, Aichi 461-0004, Japan
Tel	+81-52-935-3931
Email	nagoya@omata-s.co.jp
Website	http://www.omata-s.co.jp
Contact Person	Hideki Imaki, Nagoya branch manager Moto Nakano, Tokyo branch manager
Capability Category	Development, design, manufacturing and sales of heavy weight roller shutter, fire shutter, smokeproof shutter
Representative	Masahiro Omata
Sales Amount	JPY 1,035,533,110
Capital	JPY 230,000,000
Employees	54
Established	April 28, 1948
Major Customers	Japan Aerospace Exploration Agency (JAXA) US Yokota Air Base Nakanihon Air Service



■ BUSINESS OVERVIEW

Omata Shutter, a leading provider of roller shutters with history of longer than 70years, has been providing various kinds of shutters like heavy weight roller shutter, fire shutter or smokeproof shutter, and has solid records of installing its products to many landmark buildings of governmental offices or large commercial facilities across the country. We have recently been appointed as a sole distributor of Megadoor, a vertical lifting fabric door that is a global brand with a plenty of installation records worldwide, and we have been successfully increasing the inquiries and businesses for this product mainly from space, aviation or defense industry. Also, uniquely positioned we are with the customized product to special needs and proud of being effectively sole manufacturer in the country of roller shutters for the shipboard helicopter of JMSDF, JCG and others.

■ PRODUCTS/MATERIALS/PART SIZE/FACILITIES & EQUIPMENT

Megadoor, a vertical lifting fabric door, has rich features as opposed to conventional roller shutters.

1. Wide opening
2. No rust or decay
3. No floor track needed which often hinders smooth operation
4. Minimum energy loss thanks to high thermal insulation performance
5. High resistance to wind/snow load
6. Efficient operation by full automatic opening and closing

■ OUR STRENGTH

Our long and deep experience in developing, designing, manufacturing, and supporting roller shutters across the country will certainly help to meet the needs for secure entrances of space and aviation industry.

■ NEEDS WE CAN CORRESPOND/BUSINESS PARTNERS WE WANT

We are seeking opportunities to get in touch with operators who are interested in secure entrance systems for their hangar for large equipment like aircraft, helicopter etc. to which our Megadoor will best fit.

■ OFFICE & PLANTS

HQ, Kita-ku, Tokyo
Tokyo branch, Kita-ku, Tokyo
Yokohama branch, Kanagawa
Saitama branch, Saitama
Saitama factory, Saitama

26 COMPANY PROFILE

PILGRIM AEROSPACE FASTENERS



Address	2875 West Frye Road Chandler, AZ 85224
Tel	(480) 917-2500
Email	BaiseN@pilgrimaero.com
Website	www.pilgrimaerospace.com
Contact Person	Nick Baise, CEO
Capability Category	Machining, Jigs and tools
Representative	Nick Baise, CEO
Sales Amount	N/A
Capital	N/A
Employees	80
Established	1932
Certification	AS9100D/ISO9001
Group Name	Meidoh
Major Customers	BDSI, Airbus, Lockheed-Martin Raytheon

■ BUSINESS OVERVIEW

Specializing in Military Specification AN/MS/NAS threaded fasteners and other unique hardware.

■ PRODUCTS/MATERIALS/PART SIZE/FACILITIES & EQUIPMENT

The Chandler manufacturing facility specializes in cold heading, hot forging, centerless grinding, and thread rolling. titanium, A-286, Inconel™, H-11, Ferrium S53

■ OUR STRENGTH

We specialize in externally threaded fasteners and clevis pins. Our primary customer base is Aerospace and Defense.

■ NEEDS WE CAN CORRESPOND/BUSINESS PARTNERS WE WANT

Pilgrim seeks to work with OEM's to develop new products and qualify as a source on company standards and specials.

■ OFFICE & PLANTS

U.S.A.

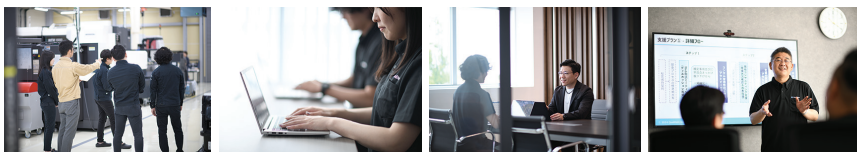
27 COMPANY PROFILE

QUALITEM CO., LTD. Qualitem

Address	3-22-24 ATS Hirokoji Bldg. 6F Naka-ku Nishiki Aichi, Nagoya 460-0003
Tel	052-265-8442
Email	info@qualitem.co.jp
Website	https://qualitem.co.jp/
Contact Person	Daisuke Hishikawa
Capability Category	inspection, others
Representative	Daisuke Hishikawa
Capital	5 million yen
Employees	8
Established	May 2nd, 2022
Major Customers	TOYOTA TSUSHO MATERIAL INCORPORATED JAMCO CORPORATION Nippi Corp. Niigata Aerospace Corporation etc.

■ BUSINESS OVERVIEW

We provide support for quality assurance, QMS establishment/operation, and problem solving. We have many experienced experts who have been deeply involved in the aerospace industry, and we will support and lead you to a solution to any issue in manufacturing and quality.



■ PRODUCTS/MATERIALS/PART SIZE/FACILITIES & EQUIPMENT

Consulting: QMS establishment/operation, quality improvement, organizational revitalization, problem-solving support, etc.

Seminar/Training: Explanation of standards (QMS, SPEC), internal auditor training seminar, basic quality assurance education, etc.

Outsourcing: Interpretation/translation (English), document preparation, inspection/inspection work, etc.

■ OUR STRENGTH

We can handle a wide range of quality-related matters, from QMS establishment to inspection practices.

We also have the technology/knowledge of metal materials, special processes, production technology, and automotive (IATF 16949), etc., and can make the best proposals to meet your challenges.

■ NEEDS WE CAN CORRESPOND/BUSINESS PARTNERS WE WANT

- For companies that are challenging to obtain QMS certification such as JISQ9100 and are having trouble with its operation.
- Companies that are having trouble training internal auditors and quality assurance/inspection staff
- Companies that are having trouble with audits (interpretation) from overseas customers, translation of requirements, etc.
- Companies that are having trouble with inspection practices, document reviews, etc., and lack the manpower to handle them
- Companies that do not know what to do about their problems

■ OFFICE & PLANTS

HQ: Naka-ku, Nagoya City, Aichi

Nakagawa Branch: Nakagawa-ku, Nagoya City, Aichi

Niigata Branch: Tsubame City, Niigata

28 COMPANY PROFILE

RYOYU GIKEN CO., LTD. & SYSTRAN JAPAN G.K.



Address	Ryoko Bldg. 3F, 6-16, Oye-chou, Minato-ku, Nagoya, Aichi, Japan
Tel	+81-52-612-7701
Email	eri-okada@ryoyu-giken.co.jp
Website	https://ryoyu-giken.co.jp/
Contact Person	Eri Okada
Capability Category	Equipment Sales, System development and design, research and development
Representative	Satoshi Kanemoto
Sales Amount	670 million yen
Capital	10 million yen
Employees	85 people
Established	September 2nd, 1978
Certification	MSJ4000
Major Customers	Mitsubishi Heavy Industries Ltd.

■ BUSINESS OVERVIEW

Since our establishment in 1978, we have continued to propose and provide system construction and design development support as a technical partner to major manufacturing companies. We provide reliable technology and services based on our past achievements and accumulated technological capabilities, as well as continuous technological study and advanced efforts. We are committed to the Rich IT School business, which provides a stable supply of IT human resource development to support the future manufacturing environment, and we support labor-saving and efficiency improvement of manufacturing processes by utilizing digital technology such as VR/MR technology to replace the tacit knowledge of skilled workers, which is in short supply. We also support the efforts to accelerate digital transformation by introducing PLM tools (Aras Innovator) to utilize data that is highly independent for each department. We also offer a variety of solutions and other services upon request.

■ PRODUCTS/MATERIALS/PART SIZE/FACILITIES & EQUIPMENT

- ◆ Design
- ◆ Design Implementation
- ◆ Development environment
PLM platform: Aras Innovator
3D modeling tool: Catia V5
- ◆ Education Business
IT Human Resource Training [Human Skill, Java, Oracle, HTML/CSS, Git, Servlet, Spring framework, Python, etc.
Job placement of IT personnel
- ◆ Aras
Introduction support service
- ◆ Various agencies
AI translation system **SYSTRAN**
Network equipment **cisco**
paperless conference system **Smart Session**
and many others

■ OUR STRENGTH

- (1) A primary contractor and technical partner of a major manufacturing company.
- (2) The management team is from an engineering background, and the employees are also engineers.
- (3) Provides a wide range of support from upstream to downstream processes of system development.
- (4) Expansion of alliance business...Aras partner
- (5) Education and training business for IT personnel...Rich IT School
- (6) Various solution proposals
- (7) Sales of various OA equipment and data collection terminals.

■ NEEDS WE CAN CORRESPOND/BUSINESS PARTNERS WE WANT

Companies that are considering an AI system that can safely and accurately translate technical terms, company-specific words, trade secrets, etc.
Companies that need training in IT technology and job placement of IT technicians.
Companies that need assistance with Aras implementation.
Companies in need of assistance with everything from requirements definition to system development.

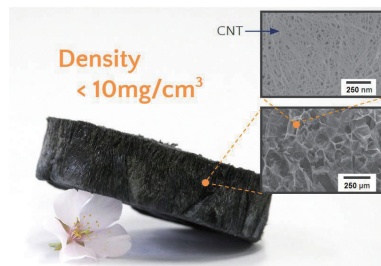
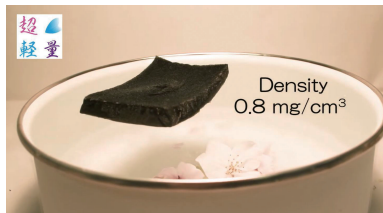
■ OFFICE & PLANTS

Oye office (HQ, administration department, service group, IT product group)
Komaki office (IT support group, Aras business group) Kaneyama office (Rich IT school)

29 COMPANY PROFILE

SORAMATERIALS INC.

Address	1-2-32, Tsurumai, Showa-ku, Nagoya, Aichi 466-0064, Japan
Tel	+81-90-6931-0128
Email	info@sora-materials.com
Website	https://sora-materials.com/
Contact Person	Tomoki Osato
Capability Category	Precision machining
Representative	Tomoki Osato
Capital	3,500,000 yen
Employees	4
Established	April 30, 2024



■ BUSINESS OVERVIEW

SoraMaterials inc. is a deep-tech startup originating from Nagoya University, focused on the research and development of "ultra-lightweight materials" that are so light they can float in the air. Despite their remarkable lightness, these materials possess functional properties such as thermal insulation, sound absorption, and electromagnetic shielding. This unique combination of "ultra-lightweight" and "functionality" sets our materials apart.

The primary application areas we envision are industries where weight reduction is crucial, such as aerospace and air mobility, contributing to further lightweighting of vehicles. Additionally, we are exploring applications in various other fields, including the automotive industry and building materials, leveraging the versatile characteristics of our materials to drive product development across a broad range of sectors.

■ PRODUCTS/MATERIALS/FACILITIES & EQUIPMENT

"Ultra-Lightweight Materials"

- Composite materials made of carbon-based and polymer-based materials
- Capable of adjusting density within a range of 0.5 to 10 times that of air density
- Possesses thermal insulation, sound absorption, and electromagnetic shielding properties
- Can produce panels approximately 30cm × 30cm × 10cm in size (custom sizes available upon request)
- If in panel form, can be shaped into virtually any design (e.g., trapezoid, circular, star-shaped, etc.)

■ OUR STRENGTH

Based on research conducted at Nagoya University, SoraMaterials Inc. specializes in the development of carbon and polymer materials. We have independently developed a unique manufacturing process for "ultra-lightweight materials" and are capable of supporting clients' needs through joint product development or even at the foundational research level.

■ NEEDS WE CAN CORRESPOND/BUSINESS PARTNERS WE WANT

SoraMaterials Inc. is capable of supporting material and product development using ultra-lightweight materials for manufacturers that require lightweight functional materials with properties such as thermal insulation, sound absorption, and electromagnetic shielding.

■ OFFICE & PLANTS

1-2-32 Tsurumai, Showa-ku, Nagoya, Aichi 466-0064, Japan

30 COMPANY PROFILE

SUN JUSHI. CO., LTD. サン樹脂

Address	14-1 Oshima Mutsushi, Kitanagoya, Aichi 481-0001, Japan
Tel	+81-568-27-3014
Email	akira-takanezawa@sunjushi.co.jp
Website	http://www.sunjushi.co.jp
Contact Person	Akira Takanezawa
Capability Category	The manufacture of plastic parts and composite material parts for aviation space and defense The manufacture of plastic, rubber and metallic products for machine and device Tool design and manufacture of products for machine and device
Representative	Taro Isomura
Sales Amount	845,300 thousand yen
Capital	9million yen
Employees	56
Established	1985
Certification	JIS Q 9100:2016/ISO9001:2015
Major Customers	Mitsubishi Heavy Industries, Ltd. Fujiwara Co. Ltd. Churyo Engineering Co., Ltd. NOF CORPORATION. SANKO MFG Co., Ltd. ShinMaywa Industries, Ltd. Tamagawa Seiki Co., Ltd.



■ BUSINESS OVERVIEW

Sunjushi is a processing manufacturer specializing in plastics
Plastic processing:cutting/maching/bonding/welding/bending
No mold required,from one piece manufacturing available
No initial cost of mold making
Convenient at small lots prototyping and development stage

■ PRODUCTS/MATERIALS/PART SIZE/FACILITIES & EQUIPMENT

【Wide range of materials】

We use materials from commodity plastics to thermoplastic resin such as super engineering plastics and thermosetting resin; Bakelite, CFRP etc.

【Facility & Equipment】

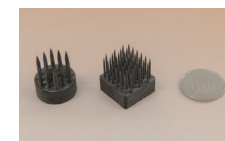
5-axis NC machine tool (INTEGREX i-200)

three coordinate measuring machine

image dimension measuring machine (IM-7020)

Surface roughness measuring instrument (SURFTEST SJ-410)

3D printer (Fortus 450mc), 3D CAD (CATIA V5)



■ OUR STRENGTH

【Factory under temperature control】

Our factory is kept the temperature stable (25± 2°(measured value))

【Processing every material】

We process not only CFRP, but also materials under development.

【Stable supply】

Promise to provide goods over a long period by balanced age structure from well-experienced employees to young employees. (The workers' average age : 33 years old.)

【Product machining results】

Dealing directly with aircraft manufacturers(G7500, US-2)

■ NEEDS WE CAN CORRESPOND/BUSINESS PARTNERS WE WANT

Want to use plastic to reduce weight.

Want to reduce parts cost of in small quantities that do not require to meke molds. (1~500 pieces)

Want suggestions on what material will be suitable.

Want to obtain reliabe quality parts on time.

Looking for suppliers of plastic processed parts

Want to reduce costs with 3D printer parts

■ OFFICE & PLANTS

Head office: 14-1 Oshima Mutsushi, Kitanagoya, Aichi, 481-0001, Japan

Branch office: 82-2 Tokuganji Fujishima,Komaki, Aichi, 485-0064, Japan

31 COMPANY PROFILE

TAKAGI INDUSTRY CO., LTD.

Address	2-3-6 Rokuban, Atsuta-ku, Nagoya, Aichi 456-0058, Japan
Tel	+81-52-611-3239 (Representative of Aerospace Division)
Email	aerospace@takagikk.co.jp (Representative of Aerospace Division)
Website	http://takagikk.co.jp
Contact Person	Minoru Takeshima
Capability Category	Machining processing Sheet metal processing Tooling, Jigs
Representative	Yuji Takagi
Sales Amount	9.6 hundred million yen
Capital	20 million yen
Employees	60
Established	January 1951
Certification	JIS-Q-9100: 2016, ISO9001: 2015, SJAC9068B, MSJ4000, SQR-001, ISO14001: 2015
Major Customers	Mitsubishi Heavy Industries, Ltd. ShinMaywa Industries, Ltd. Mitsubishi Fuso Truck and Bus Corporation HOSHIZAKI CORPORATION etc.

■ BUSINESS OVERVIEW

We will continue to take on the challenge of creating new value through sheet metal processing.

- Sheet metal forming and machining of aerospace and defense equipment parts.
- Processing of sheet metal parts for large, medium and small buses and assembly by welding, bonding and fastening.
- Processing and assembly of sheet metal parts for business use freezers.



NC Router



3D Laser Processing Machine

■ PRODUCTS/MATERIALS/PART SIZE/FACILITIES & EQUIPMENT

- < Products > • Sheet metal parts for aerospace and defense equipment parts.
 - Doors, side doors and ceiling frame parts for large, medium and small buses. etc.
 - Ice storage/icebreaker for business use.
- < Materials > Aluminum alloys (1050, 2024, 5052, 6013, 7075, etc.), Steel, Stainless steel, Titanium alloys, etc.
- < Main equipment > • NC Router (1900X1230 t : ~8) etc. 2units
 - NC Turret punch press (2500X1270 t : ~3.2) etc. 2units
 - NC Milling machine (820X520X410) etc. 2units
 - 200~500 t Double crank press 3units
 - 25~110t Torque pack press 7units
 - Deburring machine (W : ~600) 1unit
 - 18~80 t Bending machine (L : ~2500) etc. 6units
 - Shearing press (L : ~2500 t : ~6.5) etc. 3units
 - 3D Laser Processing Machine (2500X1600X550) 1unit
 - Laser/Punch Combination Machine (2500X1270) 1unit
 - Robot welding machine 4units Welding machines (CO2, TIG, MIG, SPOT) Many units
 - Urethane injection foaming machine 1unit
 - General-purpose processing machine, Conter machine, 3-Roller bending roll, Drilling machine etc. Many units
 - CATIA-V5 1unit AP100 3units General purpose CAD/CAM Many units

■ OUR STRENGTH

- Can handle a wide variety of metals and non-metals, and can handle small-lot, high-mix products.
- Blank processing machine, the NC router, that enables rapid and low-cost response suitable for small-lot, multi-variety production.
- Blank processing machine, punch laser combination machine that can handle a wide variety of materials.
- 3D laser processing machine that enables blank processing after molding and additional processing for special specifications.
- No need for special molds. Molding is done using general-purpose molds and brake presses that have been stocked through many years of experience.
- We can also assemble manufactured parts by welding, fastening, or gluing and supply them after assembly.
- JIS-Q-9100:2016, SJAC9068B certified. We continue to deliver safe, high-quality products for aerospace and defense in a timely manner.

■ NEEDS WE CAN CORRESPOND/BUSINESS PARTNERS WE WANT

- ① We can quickly respond to sheet metal processing of various types and quantities of materials.
- ② We have a wide selection of jigs and processing machines, so no special molds are required. We can handle the process with general-purpose processing machines.
- ③ In cooperation with our partner companies, we are able to provide an integrated production service spanning multiple processes, including material procurement, sheet metal processing, machining, and surface treatment.
- ④ We will propose and manufacture jigs and tools to improve productivity and stabilize quality.
- ⑤ We propose reducing costs by replacing machined parts with sheet metal parts.
- ⑥ JIS-Q-9100:2016, SJAC9068B certified. We deliver aerospace and defense products in a safe, reliable quality and in a timely manner.

■ OFFICE & PLANTS

Head office factory (Automotive / Food Equipment Division, Atsuta-ku, Nagoya)
KITAGASHIRA Factory (Aerospace defense Division, Minami-ku, Nagoya)

32 COMPANY PROFILE

TAKAGI STEEL CO., LTD. 株式会社 タカギスチール

Address	3-308 Fujimae Minato-ku Nagoya Aichi 455-0855, Japan
Tel	+81-52-301-1801
Email	t-takagi@takagi-steel.co.jp
Website	www.takagi-steel.co.jp
Contact Person	Tomohide Takagi, President and CEO Kazutaka Yamashita, Nagoya Sales Manager
Capability Category	Sales and distribution of materials for aircraft
Representative	Tomohide Takagi, President and CEO
Sales Amount	1,300 million yen
Capital	50 million yen
Employees	33 people
Established	April 8, 1955
Certification	JIS Q9100 (obtained in February 2022) ISO9001/14001 (obtained in January 2021)
Major Customers	AISIN SIN'EI Co., Ltd., DENSO Co., Ltd., AMANO Corporation, ALPHA Corporation, FDK Corporation, Konica Minolta, Inc., JTEKT Corporation, THK Co., Ltd, Tsukiboshi Manufacturing Co., Ltd., FUKUI BYORA Co., Ltd., NITTO KOGYO Corporation, Nitta Corporation, HAMANAKODENSO Co., Ltd., HAMANA PARTS INDUSTRY Co., Ltd., Hirose seikou Co.,Ltd., NIPPON POP RIVETS AND FASTENERS Ltd., MIWA LOCK Co., Ltd., Musashi Seimitsu Industry Co. Ltd., MEIRA Corporation, UNICRAFT NAGURA Corporation, YKK Corporation

■ BUSINESS OVERVIEW

In the business area, we have partnership with over 200 companies in over 60 years for sales of materials mainly for special steels and tool steels. We have advantage that be able to do parts completion to one-stop by collaboration with partners and utilizing our own factory. In line with the acquisition of JIS Q9100 certification, we have established a specialized department "Aviation Group" across sales, management and warehouse. As a result, the quality inspection and control system for handling aircraft materials has been strengthened.

■ PRODUCTS/MATERIALS/PART SIZE/FACILITIES & EQUIPMENT

【Handling material】

Aircraft Materials: A286, 17-4PH, 17-7PH, 15-5PH, PH13-8Mo, Nimonic80A, Inconel 718, Waspaloy, PWA 92, Hastelloy, Ti6A4V, 17-22A, H-11, Greek-Ascoloy, 4130, 4140, 4330, 8740, A2017, A2024, A6061, A7075

Special steel materials: SKH51, SKH55, SKH57, HAP, YXR, DURO, SLD-i, SLD-MAGIC, SKD11, SKS, SK, DAC-MAGIC, SKD61, HPM, NAK, SUS, SC, SCM, SNCM

【Major equipment】

Cutting machine, Machining center, NC grinding machine, three-dimensional measuring machine, three-dimensional CAD / CAM.

■ OUR STRENGTH

We can sales the only drawbench materials (about aeronautical field) produced by Japan domestic. We provide production scheme with "Hitachi Metals, Ltd." a major manufacturer of aviation materials in Japan and a drawbench processing. This method is in demand for heat resistant steels such as A286 and Inconel 718.

■ NEEDS WE CAN CORRESPOND/BUSINESS PARTNERS WE WANT

- We offer various service such as arranging purchase parts, designing, manufacturing and inspection, which can save your labour. (We have achieved 40% cost reduction from target price.)
- We offer service with low-cost, high quality and short delivery time. (3days is the fastest delivery after your order)
- We offer KAIZEN (e.g. cost reduction by design changes)

■ OFFICE & PLANTS

Headquarters : 3-7-19 Nishiki, Naka-ku, Nagoya, Aichi 460-0003, Japan

Nagoya Office : 3-308 Fujimae, Minato-ku, Nagoya, Aichi 455-0855, Japan

Toyohashi Office : 51-1 Motoyashiki, Mitsuya-cho, Toyohashi, Aichi 441-3114, Japan

Seto Factory : 16 Higashiyasudo-cho, Seto, Aichi 489-0053, Japan



33 COMPANY PROFILE

WADA AIRCRAFT TECHNOLOGY CO., LTD. (AERO GROUP)

Address	72-1 Gogashima, Haruhi, Kiyosu, Aichi 452-0962, Japan
Tel	+81-52-401-4713
Email	alexander@wadass.com
Website	http://www.wadass.com
Contact Person	Alexander Hammond (alexander@wadass.com) Shin Tada (s_tada@wadass.com)
Capability Category	Workholding Jigs & Fixtures Parts Machining Ground Support Equipment Design Engineering Others
Representative	Noriyuki Wada, President
Sales Amount	US\$9M
Capital	US\$80,000
Employees	64 (as of 2024)
Established	1955
Certification	AS9100, ISO 9001, MSJ 4000
Group Name	AERO Inc. Wada Engineering Co., Ltd. WADA TASK Co., Ltd.
Major Customers	Mitsubishi Heavy Industries, Ltd. Subaru Corporation ShinMaywa Industries, Ltd. Interstellar Technologies Inc.



■ BUSINESS OVERVIEW

Design and manufacture of jigs, fixtures, tooling and parts in the following industries:
Aerospace, Defence, OLED, Automotive

■ PRODUCTS/MATERIALS/FACILITIES & EQUIPMENT

5-Axis NC Machines: RB-250F (1), RB-200F (2)
4-Axis NC Machines: RB-260M (1)
Vertical 3-Axis: MILLAC-611V (2), MILLAC 561V (2)
Gate-Type CMM: CRYSTA-Apex (1)
CATIA V5, Auto CAD, Mastercam, Vericut



Maximum part size: 2.5m × 8m

■ OUR STRENGTH

Design and manufacture of vacuum holding jigs/fixtures for the manufacture of sheet metal parts.

Design and manufacture of layup tools for the production of resin/CFRP parts.

Design and manufacture of sheet metal forming dies.

Machining of hard to machine metals such as INVAR and Inconel.

Experience in the aerospace, automotive, and electronics industries.

■ NEEDS WE CAN CORRESPOND/BUSINESS PARTNERS WE WANT

- Manufacturing of high-mix, low volume tooling and parts.
- Manufacturing and business support for overseas Tier 2 and Tier 1 companies, together with OEMs

■ OFFICE & PLANTS

HQ

Matsusaka Factory

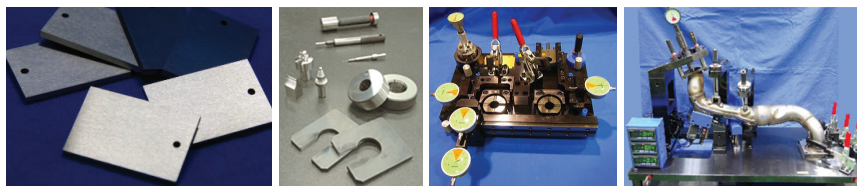
Nishibiwajima Factory

34 COMPANY PROFILE

WATANABE SEIMITSU INDUSTRIES, LTD.



Address	1-59-1 Juichiya, Minato-ku, Nagoya JAPAN 455-0831
Tel	+81-52-383-8282
Email	info@wsl-g.co.jp
Website	https://www.wsl-g.co.jp
Contact Person	Sales Manager: Naoki Kamiyama
Capability Category	Manufacturer
Representative	CEO: Masaaki Teranishi
Sales Amount	550 million yen
Capital	24 million yen
Employees	40 people
Established	Oct. 1947
Certification	JISQ9100 (Certification number BSKA0328) MSJ4000 (Certification number MHIY-7075)
Major Customers	MHI, AEL, KHI, etc.



■ BUSINESS OVERVIEW

We are a company that designs and manufactures high-precision gauges, jigs, and parts using special jigs and tools developed in-house, using high-precision machine and using processing techniques that bring out more power than the machine's performance, to create one-of-a-kind products that cannot be mass-produced.

■ PRODUCTS/MATERIALS/PART SIZE/FACILITIES & EQUIPMENT

Parts: Very small to medium volume production parts

Gauges: Comprehensive gauge and single gauge (plug gauge, scissor gauge, template, taper gauge, spline gauge, spherical gauge, etc.)

Jigs: Machining jigs, inspection jigs, etc.

Mold: Precision mold parts

Others: Measuring instruments, dedicated machines, testing machines, three-dimensional processing, small hole processing, carbide processing, ceramics processing, Prototype parts, etc. Overseas sourcing.

Design: Design and production (3D, 2D)

System development: C, C#, Python, VBA, WordPress, etc.

■ OUR STRENGTH

Creating "Manufacturing": We own many machine that support precision machining in microns, and use processing technology that uses proprietary jigs and tools developed in-house to bring out power beyond machine performance.

Creating "Human resources development": Excellent technicians, mainly japan certified technicians, who have integration skills honed by the complex shapes of the aerospace business and creative ideas for construction methods. Creating "System": Accurate production progress management and reliable traceability management using IT systems Quality management system for the aerospace industry (JISQ9100) Highly confidential information management based on ITAR.

■ NEEDS WE CAN CORRESPOND/BUSINESS PARTNERS WE WANT

Participating in the aerospace industry from the development stage, from prototyping to mass production of high-precision parts, gauges, and jigs

■ OFFICE & PLANTS

Head Office Factory

35 COMPANY PROFILE

YUTAKA ELECTRONICS INDUSTRY CO., LTD.



Address	Hitotsugi-sho, 5-12-9, Kariya-shi, Aichi-Pref., 448-8533, Japan
Tel	+81 (0)566 23 2301
Email	sirobot.info@ytk-e.co.jp
Website	https://www.ytk-e.com/
Contact Person	Daisuke Matsuo, Hideki Aoki, Masaru Kuramitsu
Capability Category	Industrial Robot Systems, Robot processing, Robot Inspection, Heat treatment equipment
Representative	Takafumi Morita
Sales Amount	JPY10,603 Million
Capital	JPY 45,000,000
Employees	444
Established	July 1st, 1964
Certification	ISO9001, ISO141001, ISO/EC27001
Major Customers	Toyota, Honda, NISSAN, SUZUKI, Daihatsu, Chubu Electric Power, Boeing, MHI, SUBARU

■ OFFICE & PLANTS

Headquarter, 5 Plants (1st, 2nd, 3rd, Toyoake, and 5th)



■ BUSINESS OVERVIEW

We are a system integrator that engages in everything from the development of processing element technologies to the proposal, design, manufacturing, commissioning, inspection, and maintenance of integrated production lines using those technologies. We build the process of product creation and shipment within the system.

■ NEEDS WE CAN CORRESPOND/BUSINESS PARTNERS WE WANT

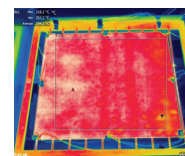
We offer proposals from development to mass production line construction for customers considering robotic automation systems in heating and processing manufacturing processes.

■ PRODUCTS/MATERIALS/PART SIZE/FACILITIES & EQUIPMENT

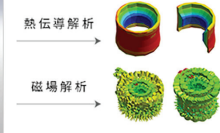
Robot Automation Integrated Production Line

· Heat treatment technology: High-Speed uniform heating of thermoplastic composites (CFRTP, GFRTF) using heated steam, high-frequency induction heating, and laser hardening

< Superheated Steam Heat Treatment System >

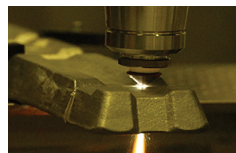


< High Frequency Induction Heating Equipment >

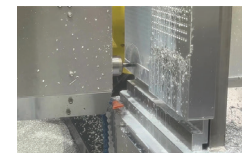


· Robot, Processing, Technology: Drilling, Fastening, Laser Cutting, Processing and Deburring

< Laser cutting >



< Laser cutting >



< Robot Inspection : MetraSCAN 3D >



■ OUR STRENGTH

The technology that we have cultivated over many years as a builder of automotive manufacturing lines not only encompasses the automotive field, but also includes the essential technologies of "heating" and "processing," as well as the application of advanced technologies. We have broadly proposed and provided optimal robotic systems to our customers in various fields including aviation, construction, materials, and logistics (AGV/AMR). In terms of digital utilization, by creating commissioning data through virtual commissioning, we significantly shorten the startup time on-site and enable early detection of issues and optimization of processes.



Aichi Prefectural Government



City of Nagoya



Central Japan Aerospace Total Encouragement Center



Aichi Industry Promotion Organization



Nagoya Industries Promotion Corporation



METI
Chubu Bureau of Economy, Trade and Industry



Komaki City



Nagoya Chamber of Commerce & Industry



Japan External Trade Organization(JETRO)
JETRO NAGOYA



GREATER NAGOYA
INITIATIVE
Greater Nagoya Initiative Center



NAGOYA UNIVERSITY



CHUBU UNIVERSITY



愛知県立大学
Aichi Prefectural University

AICHI-NAGOYA AEROSPACE CONSORTIUM

CONTACT

Next Generation Mobility Division, Bureau of Economy and Industry, Aichi Prefectural Government

3-1-2 Sannomaru, Naka-ku, Nagoya, Aichi 460-8501, Japan

TEL +81-52-954-6349 E-mail jisedai@pref.aichi.lg.jp URL <https://aichi-nagoya-aerospace.jp/>

Aichi Prefectural Government / City of Nagoya / Central Japan Aerospace Total Encouragement Center / Aichi Industry Promotion Organization / Nagoya Industries Promotion Corporation / Chubu Bureau of Economy, Trade and Industry / Komaki City / Nagoya Chamber of Commerce & Industry / Japan External Trade Organization(JETRO) JETRO NAGOYA / Greater Nagoya Initiative Center / Nagoya University / Chubu University / Aichi Prefectural University



Website



LinkedIn



Issued in August, 2025